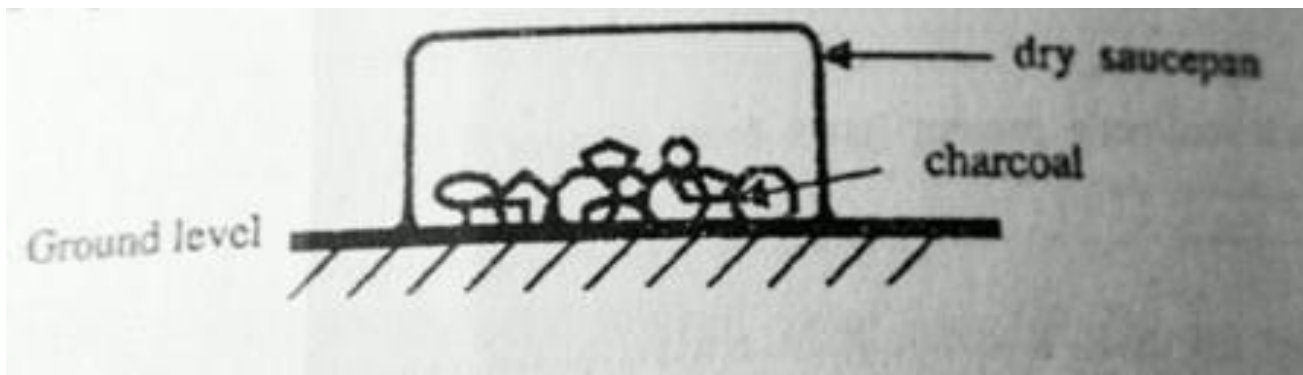




## SCIENCE 2000

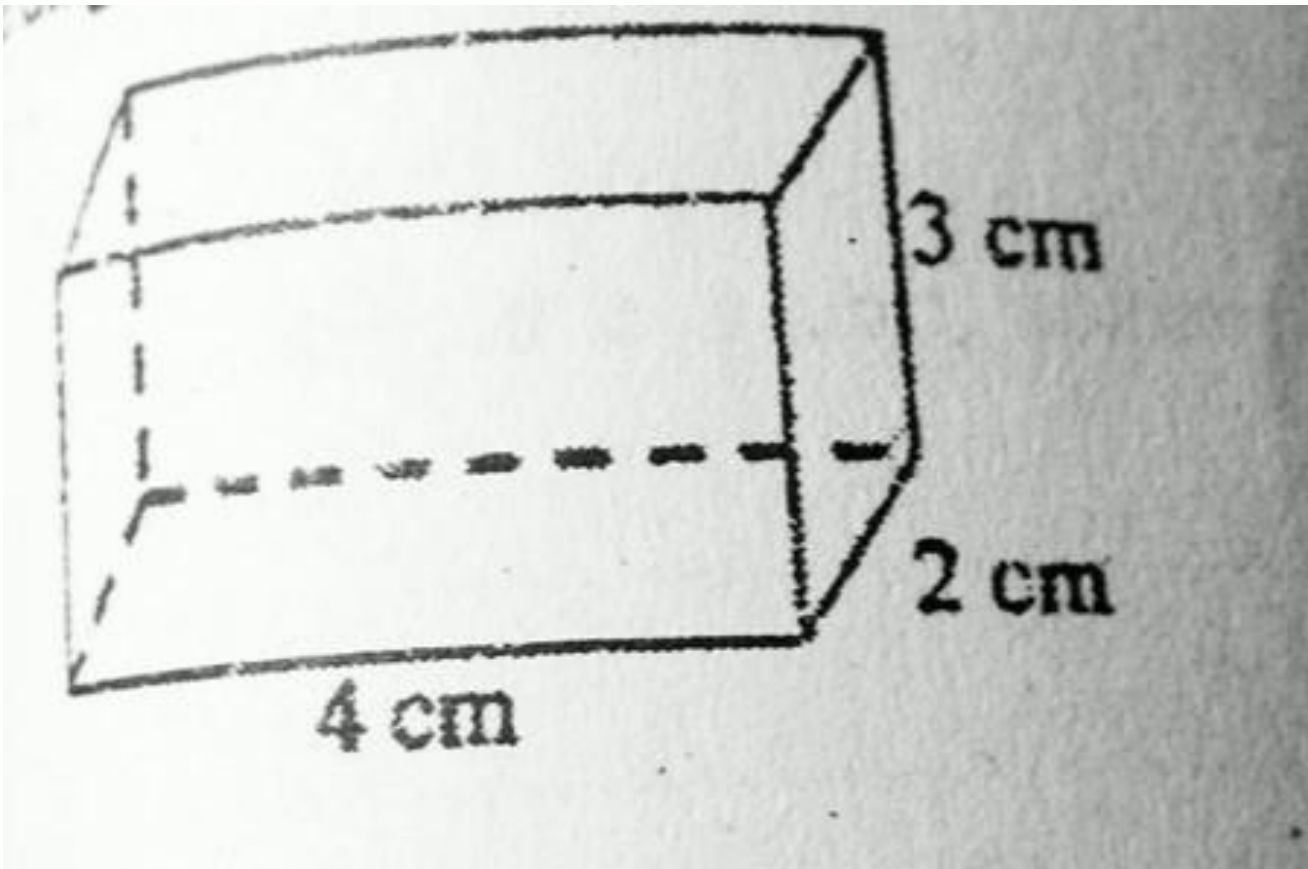
### SECTION A

1. Which substance can exist in all of the three states of matter?
2. How does a millipede protect itself from danger?
3. Why is a mushroom not a true plant?
4. Why are canine teeth suitable for tearing food?
5. Give one of the secondary sex characteristics that are common in both adolescent boys and girls.
6. How is the function of motor nerves different from that of a sensory nerve?
7. Why is a dry season most suitable for crop harvesting?
8. Why is it importance of de-beaking in poultry?
9. State any one sign of a dehydrated child.
10. In the diagram below, burning coal was removed from a charcoal stove(sigiri) and it was covered by a dry saucepan as shown. After a short time, it stopped burning. Explain why the charcoal stopped burning.



11. Give one sign you would use to identify a compound fracture.
12. Why is the spacing of children important to a family?
13. State one external physical feature one would use to identify a cock in poultry.
14. What is soil erosion?
15. Give one reason why water passes through sandy soil fastest.
16. Alex keeps his left-over food well covered. Why does it go bad after sometime?
17. Give one main difference between plants and animals.
18. Why is carbon dioxide used as a fire extinguisher?
19. Mukasa's baby has three signs:
  - very underweight
  - always hungry
  - pot belly
  - bony face
  - wasted musclesWhat disease is the baby likely to be suffering from?
20. Besides use of seeds, what other part of a flowering plant can be used for propagation?

21. The diagram below shows a chalk box. Find its volume.



22. State one of the characteristics of the objects that float on water.

23. Why is the moon not regarded as a star?

*Study the animals given in list A and those in B. Use it to answer question 24 and 25.*

**A: FISH, BIRD, FROG**

**B: MAN, WHALE, BAT**

24. How do animals in list A differ from those in B as regards their reproduction?

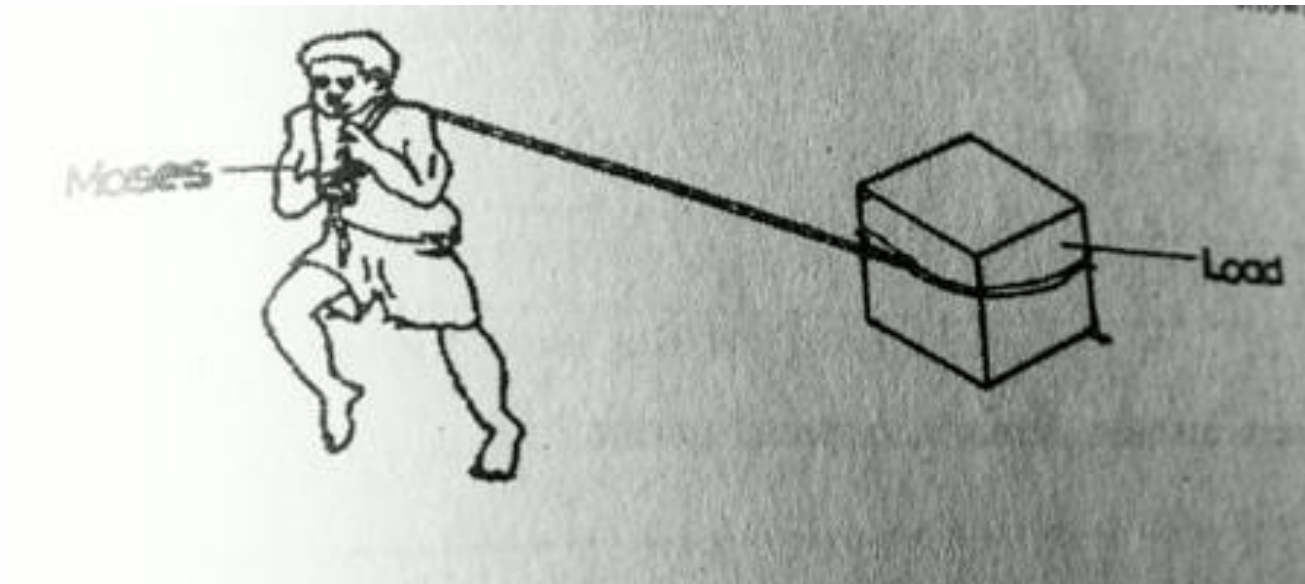
25. How are animals in List A similar to those in List B?

26. What is the source of energy in thermal electricity?

27. Give one way in which friction is useful to a person riding a bicycle.

28. Josephine could only read noted when the book was at a distance of not more than one metre from her eyes. What advice would you give Josephine?

29. In the diagram, Moses is pulling a load along the ground surface as shown below.



How could Moses make his work easier?

30. What is the First Aid for high fever?

31. In terms of machines, how is the hammer similar to the human arm?

32. What should be done to a clinical thermometer before taking the temperature of a person?

33. How can a child acquire artificial immunity?

34. How does a vent help to reduce smell in a VIP latrine?

35. What is one possible danger of buying drugs from a local shops or markets?

36. What is near drowning?

37. What feature enables a housefly to spread germs?

38. Why is budgeting in a family useful?

39. Give one example where bacteria are useful to man.

40. Draw a diagram to show self pollination in a flower.

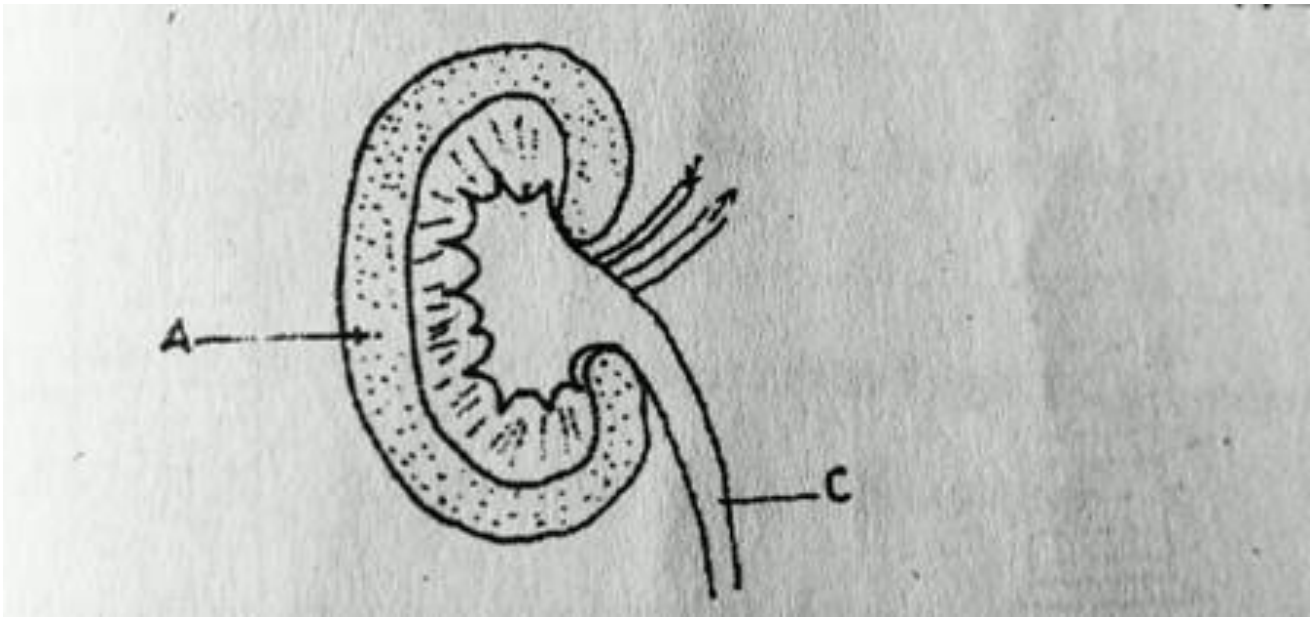
### SECTION B

41. a) Give two characteristics of insect pollinated flowers.

b) Why is a moth able to pollinate plants at night?

c) State the difference between self- pollination and cross-pollination.

42. The diagram below shows the structure of a kidney. Use it to answer questions (a) and (b).



a) Name the part labelled with letter A.

b) What substance goes through the part labelled C?

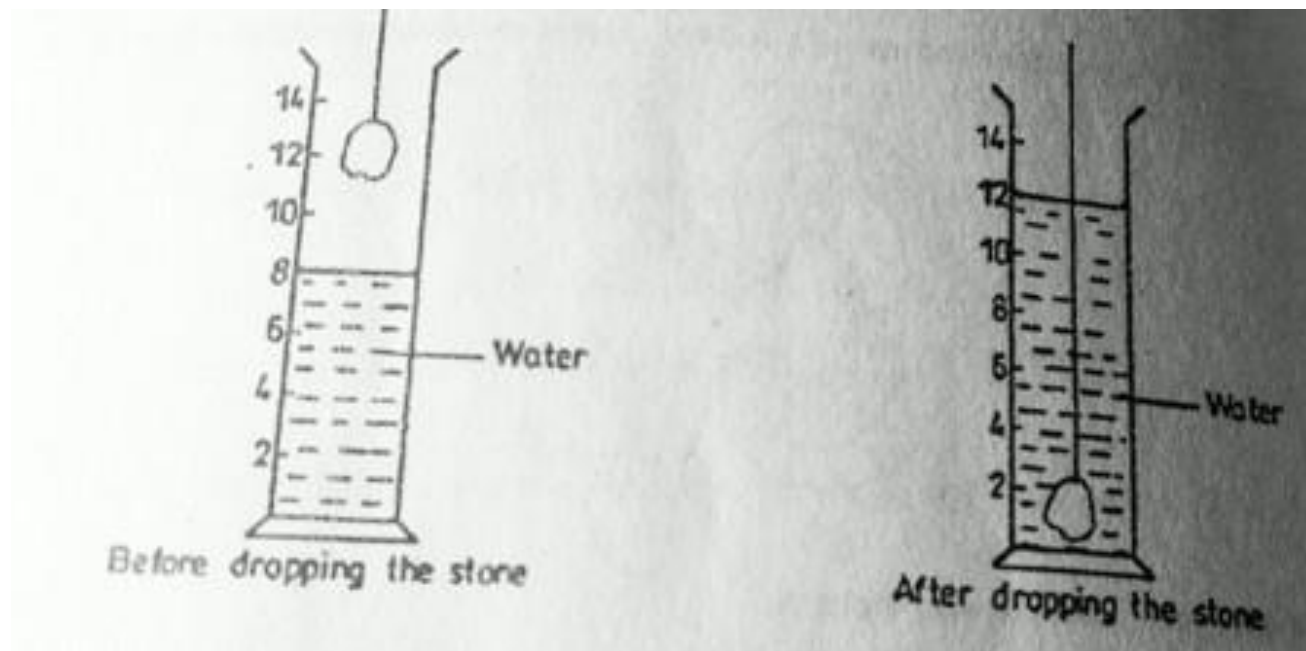
c) State any two functions of the kidney that are similar to those of a skin.

43. a) State any one characteristic of social insects.

b) Give any two characteristics of flowers which attract bees to visit them.

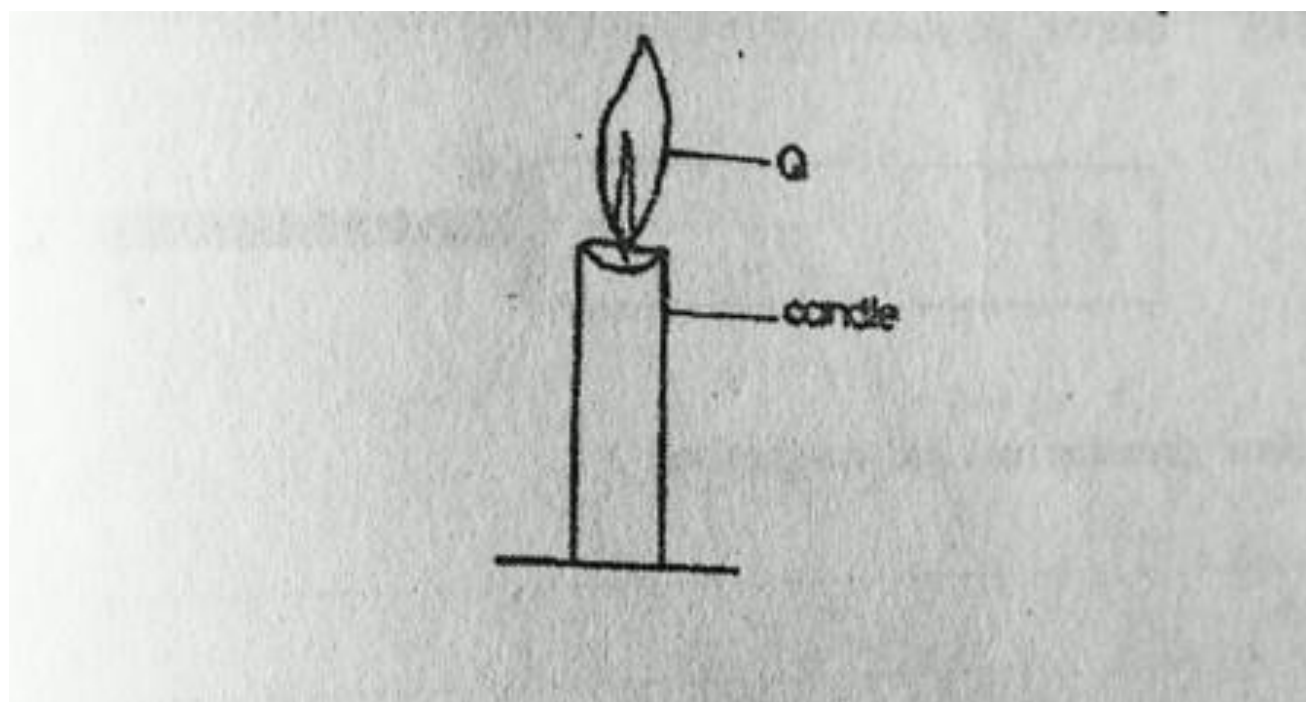
c) Why is a worker bee not able to reproduce?

44. The diagram below is a method of measuring an irregular object. Study it and answer questions that follow.



- a) Calculate the volume of the stone.
- b) Name the method used to find the volume.

45. The diagram below is of a burning candle. Use it to answer questions (a) and (b):



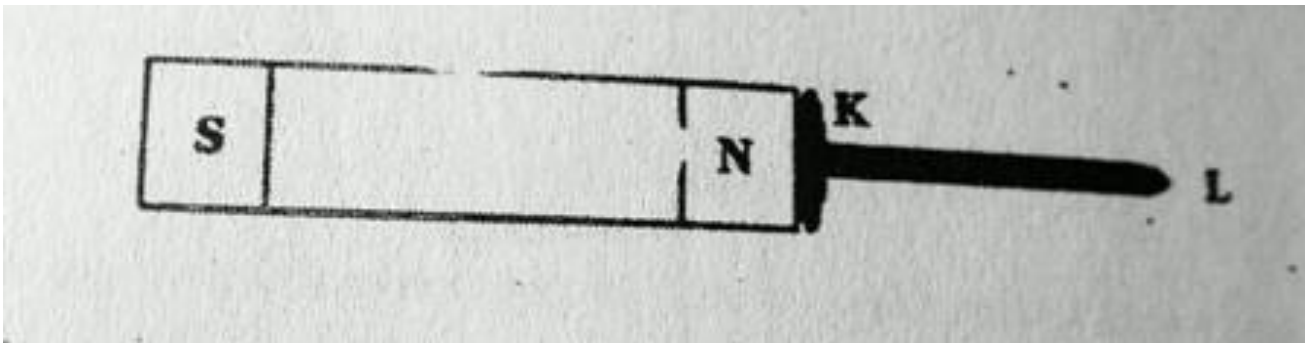
- a) What two forms of energy are given off at Q?
- b) What gas is supporting the process?
- c) What other process in living things produces the same gas as the candle?

46. Use the list of foodstuffs given below and answer the following questions.

**BEANS RICE CABBAGE MILK ORANGES**

- a) Give two foodstuffs that are a source of proteins.
- b) How are cabbages useful in one's diet?
- c) Why would you regard a list of the foods given above a balanced diet?

47. In the diagram below, when the nail was brought nearer to the magnet, it was attracted as shown. Use the diagram to answer questions (a) to (d) below.



- a) How does the nail get magnetised?
- b) Name the pole marked L.
- c) Which other method can be used to magnetise the nail without using a magnet?
- d) Name the type of magnet in (c).

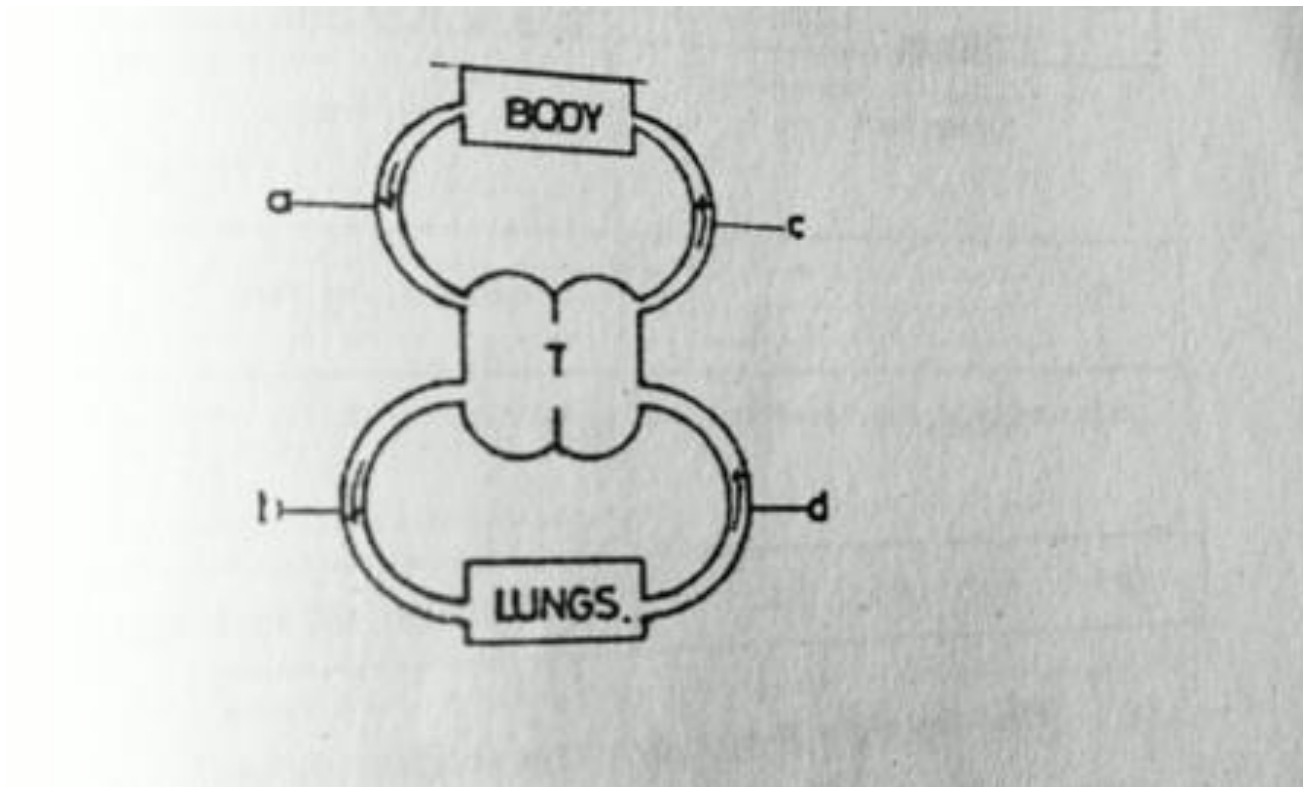
48. a) What is the use of a First Aid Box?

b) What is meant by drug abuse?

c) Give any two pieces of advice to a person who is on drug abuse.



49. The diagram below is an illustration of a blood circulation in a mammal. Study it carefully and use it to answer questions (a) and (b) below.



- a) What body organ does part T represent?
- b) What is the difference in the blood carried by blood vessels marked band c?
- c) Give the difference between an artery and a vein.

50. Complete the table below which shows some diseases and how they are spread among people.

Disease	How it is spread
i) Gonorrhea	..... ii)
..... infected dog bite	iii) Tetanus
.....	iv) .....
through air by coughing	



51. a) What first aid will you give to an accident victim?

b) Explain how you will administer first aid for nose bleeding.

52. a) Name two agents of soil erosion.

b) How do trees stop soil erosion?

c) How does tree-cutting in an area lead to soil erosion?

53. a) What is water pollution?

b) Suggest any two ways in which a community can improve on a water source.

c) Why is borehole water safer to drink than well water?

54. a) Suggest any two methods that can promote the idea of PHC in a school.

b) What element is promoted in PHC?

c) Identify any two activities that health committee should do in your village.

55. The table below shows part of a child's immunisation card. Use it to answer questions (a) to (d) below.

	1 2 3 Write dates of immunisation		
BGG	12/8/88	16/12/88	13/01/89
POLIO	11/8/88		
DPT	11/8/88	16/12/88	13/01/89
MEASLES	9/5/89	COMPLETED	

a) When was this child born?

b) Give a reason to support your answer in (a) above.

c) At what age was the immunisation completed?

d) Give a reason for your answer in (c) above.